

2/132 Woodburn Road BERALA NSW

2  1  1 

This lovely ground floor unit is your perfect family home or investment. With two spacious bedrooms, one of the bedrooms with built in robe. The living room has plenty of space for entertainment and eating with a north facing balcony adjoining the room. The modern kitchen contains plenty of cupboard space, gas cooking and stone bench-tops. Low maintenance back yard with covered entertaining area. The unit is ideally located 5 mins away from local shops, trains and busses. This property will not last long!

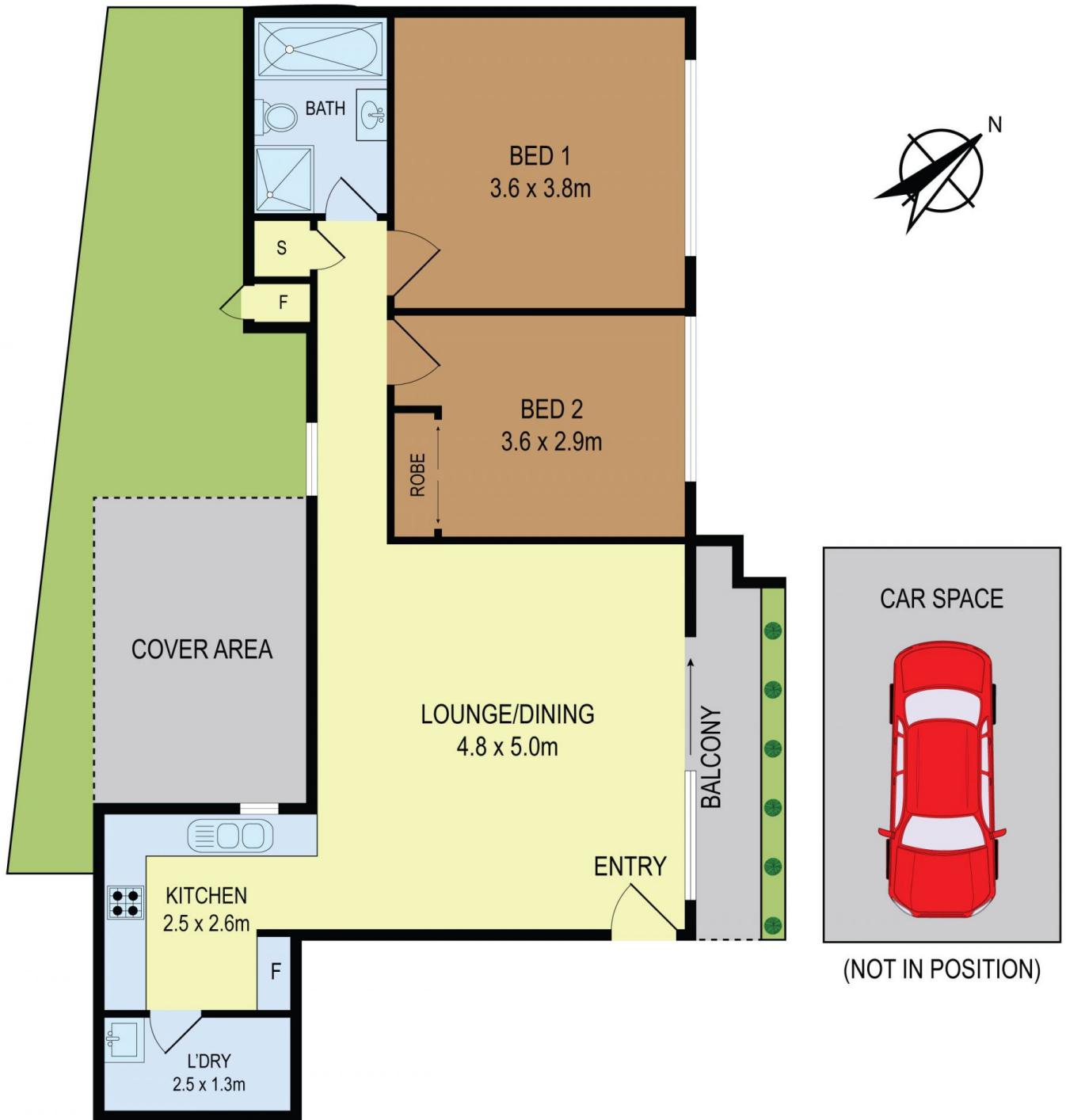
View : <https://www.hualei.com.au/sale/nsw/parramatta/berala/residential/unit/5826107>



Steven (Xuhua) HOU
0424 168 198

Features:

- Spacious bedrooms, one with built-in robe
- Gas cooking kitchen
- Spacious living space with sunny balcony
- Security parking space
- 5 min walk to Berala train station and Woolworths



All information contained herein is gathered from all sources we believe to be reliable. However we cannot guarantee its accuracy and interested parties should rely on their own enquiries.

2/122 Woodburn Road, Berle

© 2024 - Hualai Properties

Disclaimer: This advertisement serves as a guide only. Whilst all information has been gathered from sources we deem to be reliable, we do not guarantee the accuracy of this information, nor do we accept responsibility for any action taken by intending purchasers or tenants in relying upon this information.