



#### 44 Fyfe Road KELLYVILLE RIDGE NSW

5  3  2 

This immaculate two story family home is situated in a prime location of Kellyville Ridge. It is just a stones throw away from quality schools, parks and transport. And also within walking distance to The Ponds Shopping Centre, close proximity to bus transport, Easy access to the future Cudgegong station (part of the upcoming Northwest Rail Link), Rouse Hill Town Centre and Stanhope Village. It is a highly desirable first home for young growing families or for a great investment opportunity.

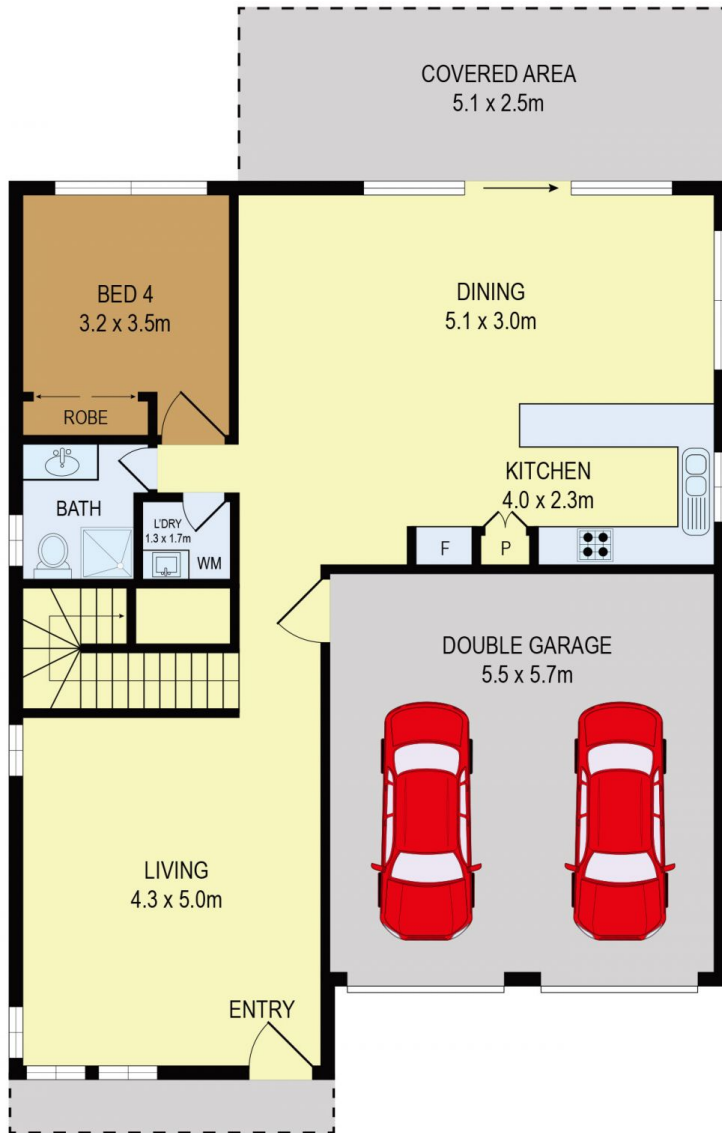
Great features including:

- 5 generous size bedrooms with built-in robes and the master room with ensuite.
- The gourmet kitchen includes stone benchtop, gas cooktop, stainless steel appliances, ample cupboard space and a breakfast bar
- Large grassy backyard with plenty of room for kids or

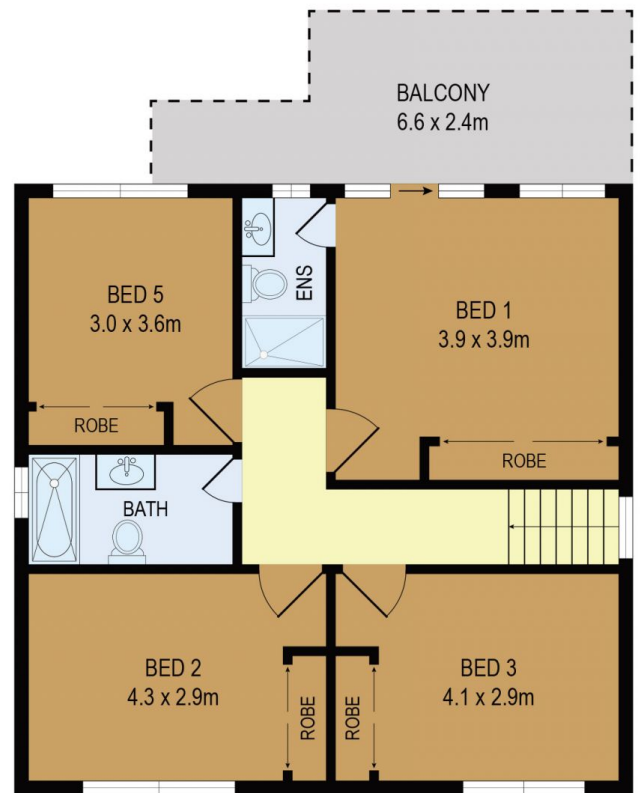
**View :** <https://www.hualei.com.au/sale/nsw/hills/kellyville-ridge/residential/house/5826113>



**Steven (Xuhua) HOU**  
0424 168 198



GROUND FLOOR



FIRST FLOOR



All information contained herein is gathered from all sources we believe to be reliable. However we cannot guarantee its accuracy and interested parties should rely on their own enquiries.

44 Eyle Road, Kellyville Ridge

© 2024 - Hualei Properties

Disclaimer: This advertisement serves as a guide only. Whilst all information has been gathered from sources we deem to be reliable, we do not guarantee the accuracy of this information, nor do we accept responsibility for any action taken by intending purchasers or tenants in relying upon this information.