



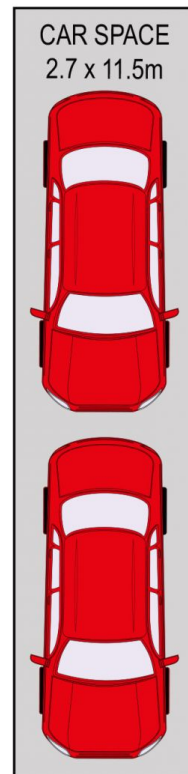
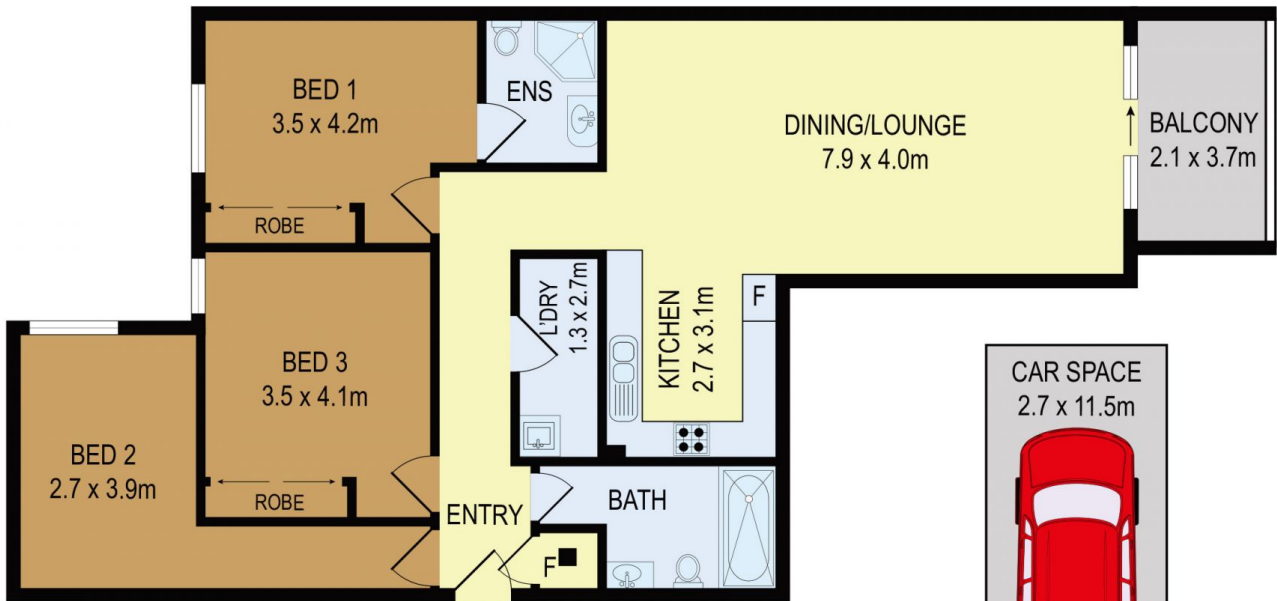
1327/100 Belmore Street RYDE NSW

3  **2**  **2** 

This luxurious apartment provides a sophisticated and easy lifestyle. It's situated in a secure building with the convenience of transport, parks, schools, shops and entertainment all within close proximity. Showcasing striking finishes and a versatile open-plan layout, it presents a rare lifestyle opportunity.

- Modern, full brick building
- Exciting Meadowbank/Ryde precinct
- Comfort of natural light
- Generous layout with contemporary easy care finishes
- Flowing interiors with generous open-plan living area
- Deluxe kitchen with stainless steel appliances, gas cooking, stone bench tops and dishwasher
- Access to a peaceful parkland at your doorsteps for entertaining with water views
- Three large bedrooms

Building Size : 151 sqm
View : <https://www.hualei.com.au/sale/nsw/north-hern-suburbs/ryde/residential/apartment/5826117>



(NOT IN POSITION)



All information contained herein is gathered from all sources we believe to be reliable. However we cannot guarantee its accuracy and interested parties should rely on their own enquiries.

CampaignPROS

© 2024 - Hualei Properties

Disclaimer: This advertisement serves as a guide only. Whilst all information has been gathered from sources we deem to be reliable, we do not guarantee the accuracy of this information, nor do we accept responsibility for any action taken by intending purchasers or tenants in relying upon this information.