



### A506/41-45 Belmore Street Ryde NSW

3  2  2 

You'll love this charming, 3 bedroom apartment with spectacular panoramic views of Shepards Bay. This 3 bedroom, 2 bathroom home with 2 car spaces will give you plenty of generous space to move about (without losing that quaint, cozy atmosphere). NBN available. Wake up each morning to awe-inspiring sunrises in the East and drift off to sleep each night with the tranquil sounds of nature. Situated in a friendly community and just thirty minutes from the magnificent Sydney CBD. It is also a 15-minute walk to the Meadowbank train station and a 10-minute walk to the Shepards Bay Village Plaza.

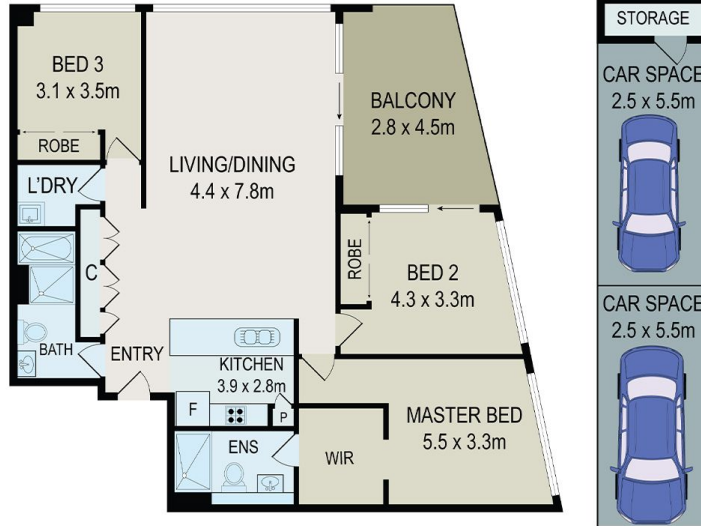
**View :** <https://www.hualei.com.au/sale/nsw/northern-sub-urbs/ryde/residential/apartment/5826165>



**Steven (Xuhua) HOU**  
 0424 168 198



**HUALEI Sales**  
 (02) 9299 5402



All information contained herein is gathered from all sources we believe to be reliable. However we cannot guarantee its accuracy and interested parties should rely on their own enquiries.



f CampaignPROS

**A506/41-45 Belmore Street, Ryde**