



## 205/14 Epping Park Drive Epping NSW

2  2  1 

This modern two-bedroom apartment is set in a secure block with parking and lift. This block is located within a 2-minute walk to a bus stop that directly links you to a multitude of destinations in minutes including Macquarie University, and Epping train station. Epping has an excellent school catchment from K-12 and all the way through to University.

### Features Include:

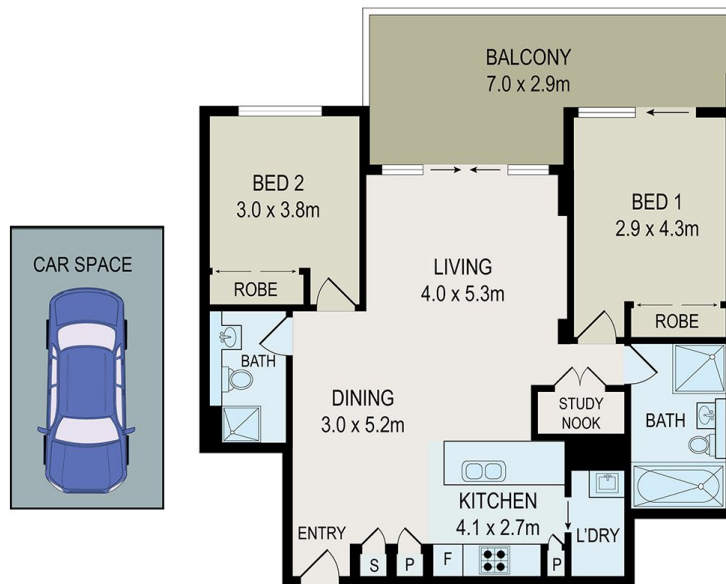
- Bright, open plan living design leading to a long, private entertainers balcony with an unobstructed view of a tree-lined landscaped view
- Modern kitchen with stone benchtops, gas cooking, and ample storage
- 2 good sized bedrooms with built-in robes and access to the oversized balcony
- Internal laundry off the kitchen that can be utilised as a

**View :** <https://www.hualei.com.au/sale/nsw/northern-suburbs/epping/residential/apartment/5826486>



**Carlos (Yong Ning) Ouyang** **HUALEI Info**  
 0451 866 668 (02) 9299 5402





All information contained herein is gathered from all sources we believe to be reliable. However we cannot guarantee its accuracy and interested parties should rely on their own enquiries.

**HUALEI PROPERTIES**



f CampaignPROS

205/14 Epping Park Drive, Epping

© 2024 - Hualei Properties

Disclaimer: This advertisement serves as a guide only. Whilst all information has been gathered from sources we deem to be reliable, we do not guarantee the accuracy of this information, nor do we accept responsibility for any action taken by intending purchasers or tenants in relying upon this information.