



1327/100 Belmore Street Meadowbank NSW

3  2  2 

This modern apartment will provide you with a laid back and easy lifestyle. The apartment is situated in a secure building with the convenience of transport, parks, schools, shops, and entertainment all within close proximity. Showcasing striking finishes and a versatile open plan layout, without comprising your privacy to the bedrooms by providing to distinctly different spaces.

Property Features

- Modern, full brick building
- Exciting Meadowbank/Ryde precinct
- Open plan living design with floorboards throughout the area
- Deluxe kitchen with stainless steel appliances, gas cooking, stone benchtops, dishwasher, easy-care finishes, and tiled flooring for your convenience
- Access to a peaceful parkland at you doorsteps for

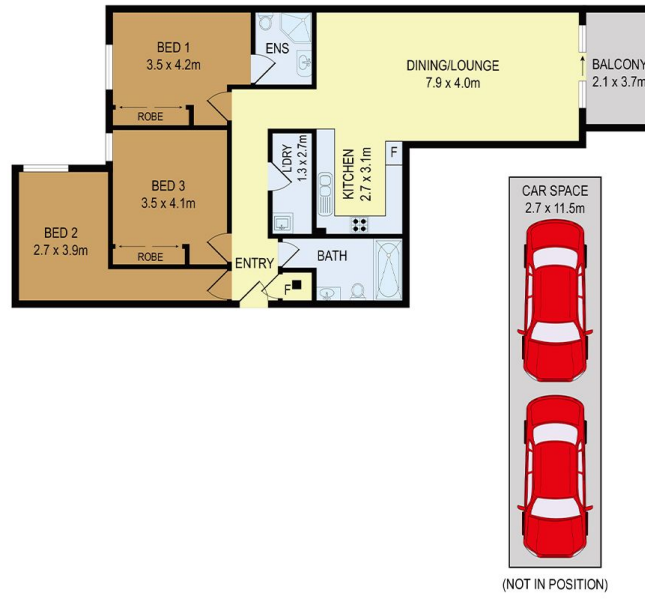
Building Size : 151 sqm
View : <https://www.hualei.com.au/lease/nsw/northern-suburbs/meadowbank/residential/apartment/5826565>



Yvonne (Yuyao) MU
 0452 415 868



HUALEI Rental
 (02) 9299 5402



All information contained herein is gathered from all sources we believe to be reliable. However we cannot guarantee its accuracy and interested parties should rely on their own enquiries.

HUALEI PROPERTIES

1327/100 Belmore Street, Meadowbank

© 2024 - Hualei Properties

Disclaimer: This advertisement serves as a guide only. Whilst all information has been gathered from sources we deem to be reliable, we do not guarantee the accuracy of this information, nor do we accept responsibility for any action taken by intending purchasers or tenants in relying upon this information.