



**307/6-10 Charles Street Parramatta NSW**

2  2  1 

Centrally located in Parramatta just minutes away to Parramatta CBD where you will have easy access to Westfield Parramatta, cafes, restaurants & and the station.

**View :** <https://www.hualei.com.au/lease/nsw/parramatta/parramatta/residential/apartment/5975716>

#### Property Features

##### \*Entry Level

- Open plan living design with carpet throughout leading to a large-sized balcony
- Modern kitchen with stone benchtops, gas cooking and plenty of storage
- Internal laundry

##### \*1st Level

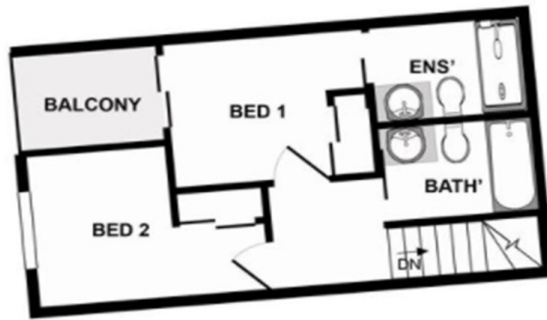
- 2 good-sized bedrooms with built-in robes, main with balcony
- 2 modern bathrooms, ensuite in main



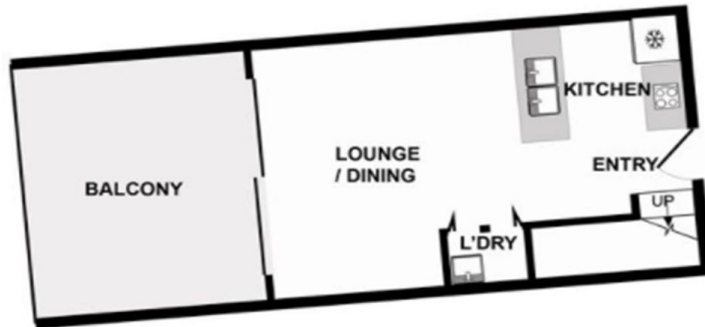
**Eddie (Siu Yuk) LAI**  
 0412 323 168



**HUALEI Rental**  
 (02) 9299 5402



UPPER FLOOR



LOWER FLOOR

**TWO BEDROOM**  
2 BED | 2 BATH | 1 CAR



**HUALEI PROPERTIES**