



**B304/66 Ashmore Street Erskineville NSW**

1  1 

This stunning 1 bedroom apartment located in a quiet street, just 4km from Sydney's CBD in the incredible serene suburb of Erskineville. Surrounded by multiple parks including the famed Sydney Park - not to mention a plethora of cafes, shopping options (brand new Woolworths Metro in the complex), schools, and train station.

**Price** : Under Contract  
**View** : <https://www.hualei.com.au/sale/nsw/inner-west/erskineville/residential/apartment/6403280>

**Property Features:**

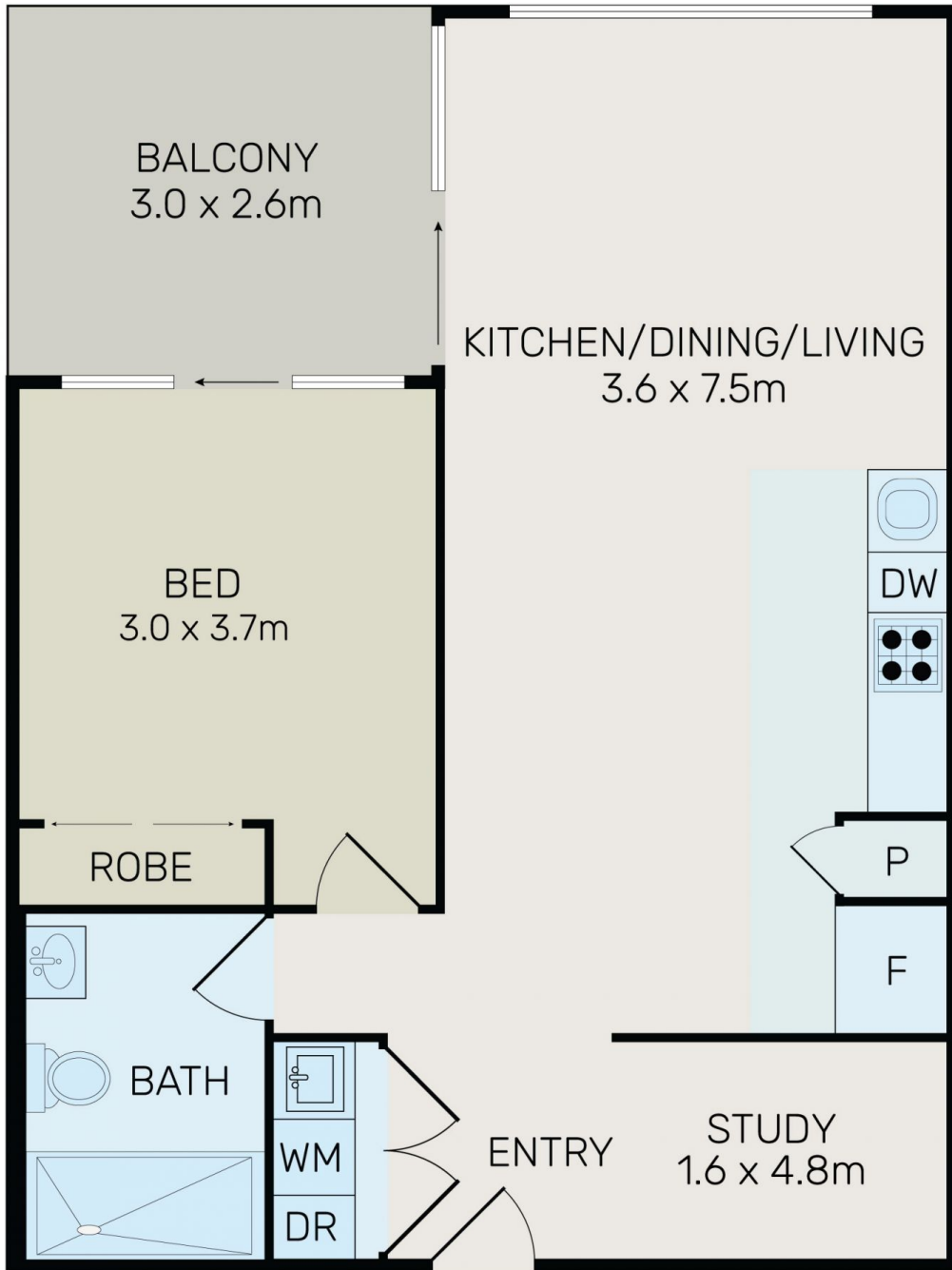
- Open plan living design with light oak floorboards throughout with access to the balcony
- Modern kitchen with stone benchtops and gas cooktop
- Modern bathroom with floor to ceiling tiles
- Generous bedroom with built-in robes, carpeted throughout, and access to the balcony
- Ducted air-conditioning
- Study area



**Jan (qi) Zhou**  
 (02) 9299 5402



**Hualei Sales**  
 02 9299 5402



All information contained herein is gathered from all sources we believe to be reliable. However we cannot guarantee its accuracy and interested parties should rely on their own enquiries.



**B304/66 Ashmore Street, Erskineville**