



78/1 Browne Parade Warwick Farm NSW

3  2  1 

Attention!! Due to COVID, we only accept private inspections. You need to book/confirmed with us before coming to inspect the property. Thanks for your cooperation.

View : <https://www.hualei.com.au/lease/nsw/liverpool-fairfield/warwick-farm/residential/apartment/6588677>

Please feel free to contact Eddie at 0412 323 168 for more information and arrange for a private inspection!!

Impeccably located within minutes to Liverpool train station, and Westfield Liverpool - This apartment will place cafes, restaurants, retail & grocery shops all at your fingertips.

Property Features:

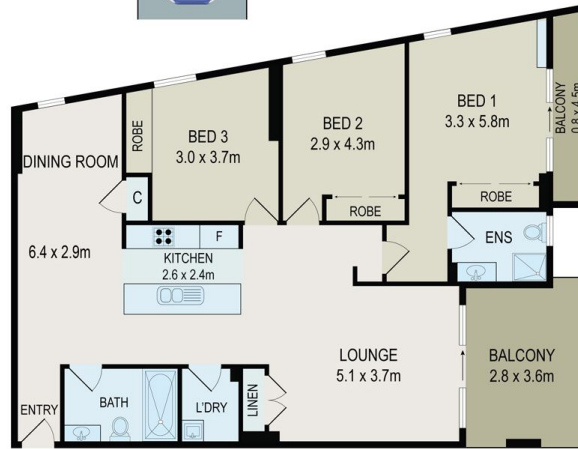
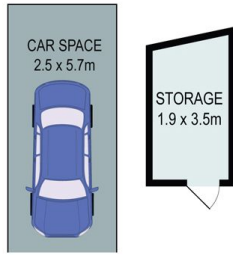
- Large open plan living design
- Contemporary kitchen with modern finishes
- 3 oversized bedrooms (main with ensuite)
- 2 modern bathrooms (including ensuite)



Eddie (Siu Yuk) LAI
 0412 323 168



HUALEI Rental
 (02) 9299 5402



All information contained herein is gathered from all sources we believe to be reliable. However we cannot guarantee its accuracy and interested parties should rely on their own enquiries.



f CampaignPROS

78/1 Browne Parade, Warwick Farm