



**601/267 Sussex Street Sydney NSW**

2  2  1 

Please feel free to contact Kenny at 0434 505 389 for more information and arrange for a private inspection!!

This is an opportunity for living in a contemporary bright two-bedroom apartment designed by internationally renowned architect Tony Owen. It has quality modern finishes throughout and open views over the CBD. Located in the heart of the CBD, fast and convenient access to Town Hall, QVB, and a short stroll to Darling Harbour, close to Sydney's best dining, shopping, and entertainment so close at hand.

**Property Features:**

- Contemporary kitchen with European appliances and gas cooking
- Generous lounge/dining opening onto the balcony
- Timber floors in living, floor to ceiling glass windows

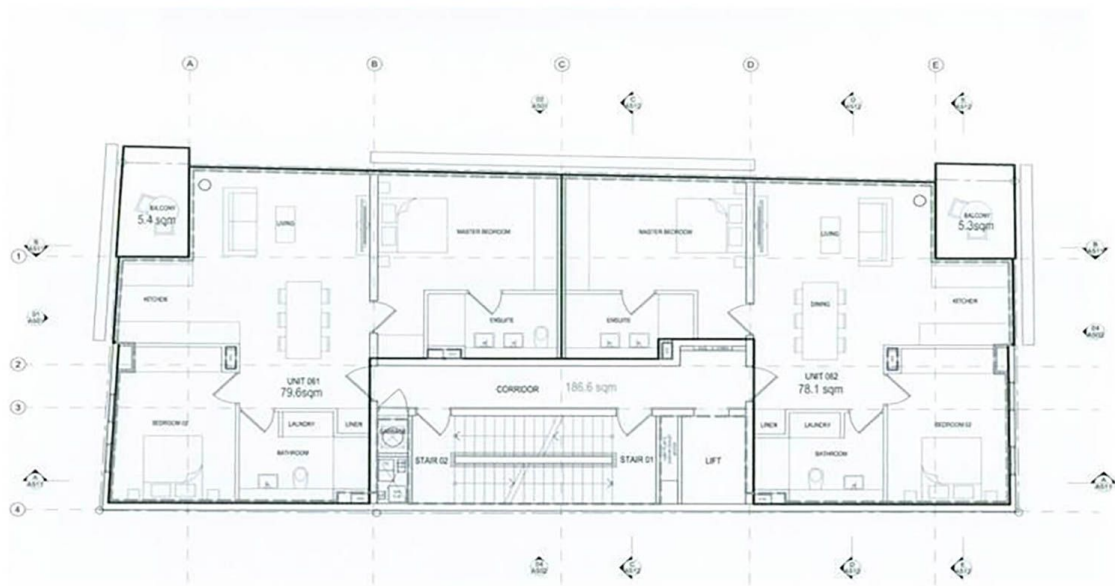
**Building Size** : 76 sqm  
**Land Size** : 82 sqm  
**View** : <https://www.hualei.com.au/lease/nsw/sydney-city/sydney/residential/apartment/691379>



**Kenny (Wenhan) WU**  
**0434 505 389**



**HUALEI Rental**  
**(02) 9299 5402**



SUSSEX STREET APARTMENTS  
 LEVELS 06-10 AREAS  
 11 February 2011

