



54/45 Bonar Street Arncliffe NSW

2  2  1 

Proudly presented by Hualei Properties is this two-bedroom plus study room apartment which provides a rare opportunity of a combination of huge square floor plan, great internal size and quality interior finishes.

Timber floors & French Windows throughout two comfortable bedrooms, flow to an oversized entertaining balcony designed for breathtaking views combined with good privacy.

You will also be amazed by the stone crafted gourmet kitchen bench tops along with splash back design. Haven't mentioned that the simplification concept for the fully tiled modern bathroom aimed at easy to maintain, and create your own.

A convenient location is a must, It's placed within a short distance from buses, Arncliffe / Wollie Creek rail station, as

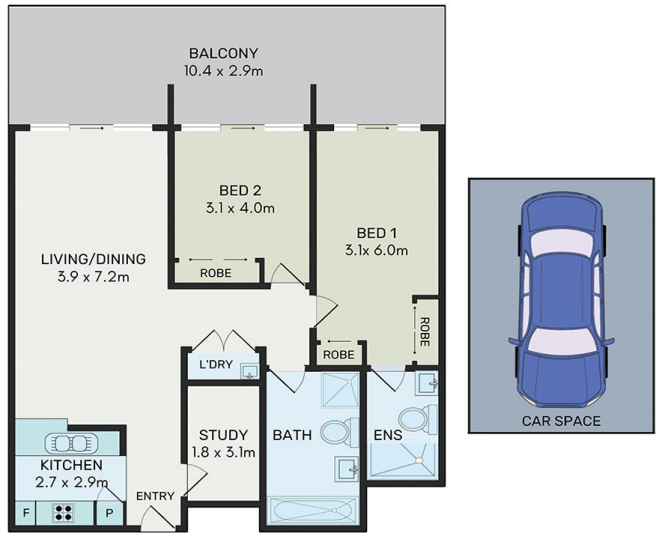
Price : \$ 750,000
Building Size : 102 sqm
Land Size : 145 sqm
View : <https://www.hualei.com.au/sale/nsw/st-george/arncliffe/residential/apartment/6922904>



Jan (Qi) ZHOU
 0403 611 359



Steven (Xuhua) HOU
 0424 168 198



All information contained herein is gathered from all sources we believed to be reliable. However we cannot guarantee its accuracy and interested parties should rely on their own inquiries.



54/45 Bonar Street, Arncliffe