

**307/6-10 Charles Street Parramatta NSW**

2  2  1 

Centrally positioned in the heart of cosmopolitan Parramatta CBD, this unique dual level apartment showcases stunning & sun filled interiors with generous proportions & an excellent sense of privacy. Proudly presented by Hualei Properties.

**Price** : \$560,000-\$590,000

**View** : <https://www.hualei.com.au/sale/nsw/parramatta/parramatta/residential/apartment/7048249>

Within a short stroll to Parramatta CBD, railway station, Rivercat ferry, bus interchange hub, Westfield Shopping Centre, parks, reputable schools, trendy restaurants, caf?s, free city loop bus & opposite NSW Police headquarters. Parramatta Public School, Arthur Phillip High School are within the catchment.

Property Features:

\* Entry Level

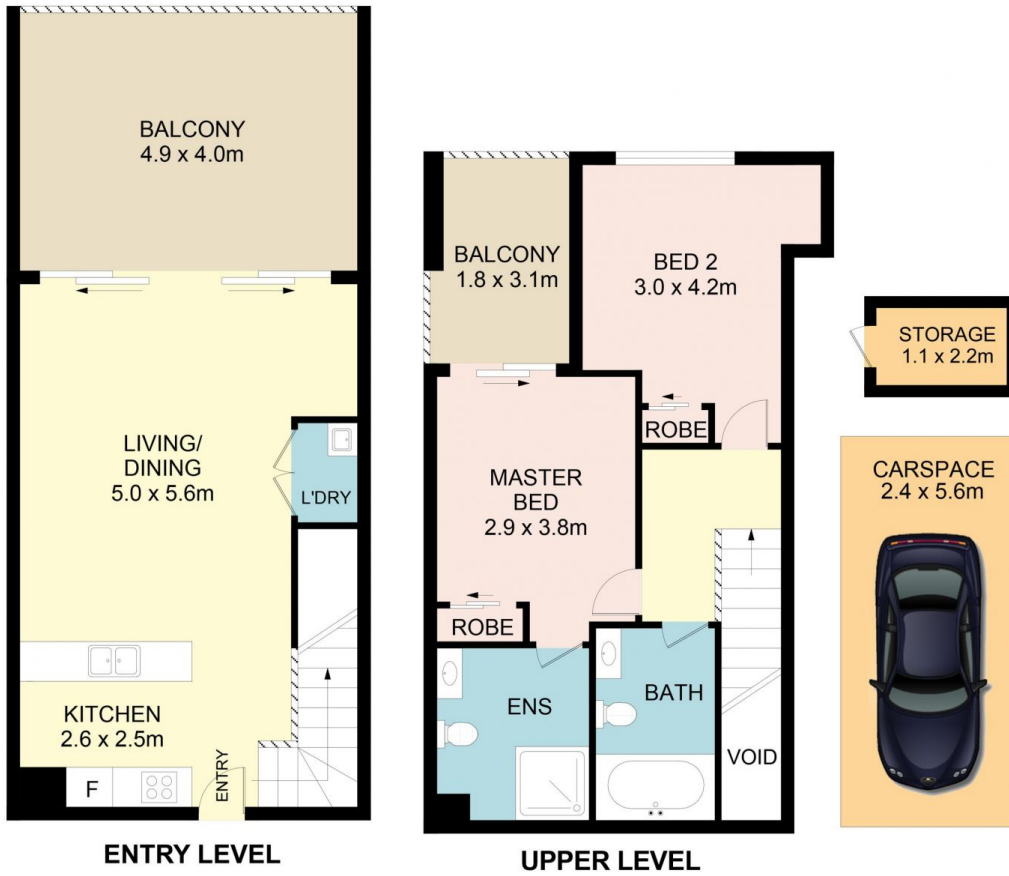
- Open-plan living design, carpet throughout leading to an oversized balcony with good private



**Jan (Qi) ZHOU**  
 0403 611 359



**HUALEI Sales**  
 (02) 9299 5402



**307/6-10 Charles Street, Parramatta**

DISCLAIMER: No liability for the accuracy of details contained within our floor plans. All plans are drawn and also checked to the best of our ability, however information contained in our floor plans such as area calculations are approximate, and have not been surveyed or drawn to scale. Our floor plans are for representational purposes only and should be used as such. Do not attempt to refer to our floor plans for structural or detailed information.

