



**114/387 Macquarie Street Liverpool NSW**

2  2  1 

Northerly sunshine streams into this luxurious designer apartment, situated on level 10 with stunning panoramic views in the security building, heralding a new era for the Liverpool City - a fast-growing region located to the south-west of Sydney. Proudly presented by Hualei Properties.

Conveniently located only mins short walk to Liverpool train station, Westfield shopping centre and local shops. And also easy access to M5 and M7. Well-connected Georges River, Chipping Norton Lakes, Holsworthy Barracks, Holsworthy Military Reserve, Warwick Farm Racecourse as well parklands, conservation areas and nature reserves.

Liverpool Public School, Liverpool Girls High School, Liverpool Boys High School are within the local school catchments.

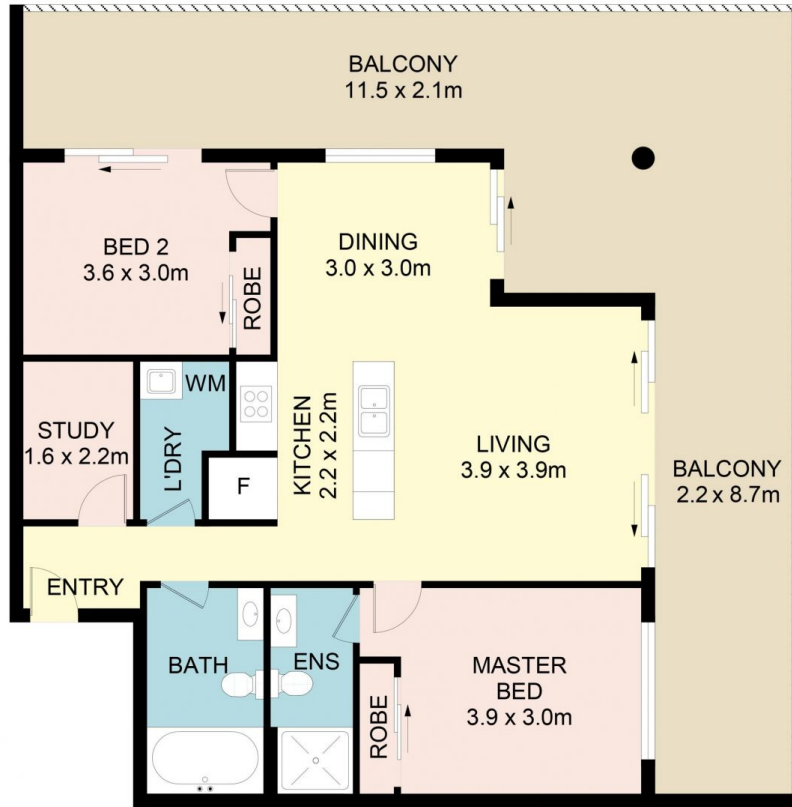
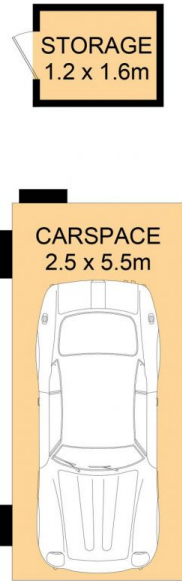
**View :** <https://www.hualei.com.au/sale/nsw/liverpool-fairfield/liverpool/residential/apartment/7050351>



**Jan (Qi) ZHOU**  
 0403 611 359



**HUALEI Sales**  
 (02) 9299 5402



## 114/387 Macquarie Street, Liverpool

DISCLAIMER: No liability for the accuracy of details contained within our floor plans. All plans are drawn and also checked to the best of our ability, however information contained in our floor plans such as area calculations are approximate, and have not been surveyed or drawn to scale. Our floor plans are for representational purposes only and should be used as such. Do not attempt to refer to our floor plans for structural or detailed information.

